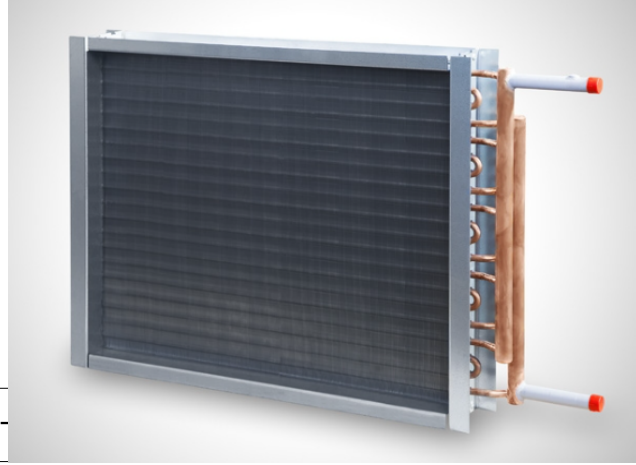




BAC 55 - 53 kw heater  
530 x 500 mm



W 3S3 G 03 18 0480 254 011 1 A L -

TECHNICAL DATA :

Total capacity available.....:	[kW]	53,1
Air flow inlet.....:	[m3/h]	4039
Air flow outlet.....:	[m3/h]	4580
Air flow Standard.....:	[m3/h]	4500
Air mass flow.....:	[g/s]	1500
Dry bulb air inlet.....:	[°C]	-10,0
Dry bulb air outlet.....:	[°C]	25,2
Air pressure drop.....:	[Pa]	251
Inlet air velocity.....:	[m/s]	5,19
Outlet air velocity.....:	[m/s]	5,89
Standard air velocity.....:	[m/s]	5,79

Fluid.....:		Water
Specific mass.....:	[kg/m3]	977
Specific heat.....:	[kj/kg.k]	4,19
Thermal conductivity.....:	[W/m.k]	0,661
Viscosity.....:	[Pas.sec]	0,0004
Total fluid pressure drop.....:	[kPa]	11
Inlet temperature.....:	[°C]	80,0
Outlet temperature.....:	[°C]	60,0
Fluid flow.....:	[m3/h]	2,33
Fluid velocity.....:	[m/s]	0,84

Pressure drop in headers exceeds 30% of the total fluid pressure drop. (73%)  
Be careful : 10 tubes not used  
All tubes are used in the calculation

Tubes type.....:		Smooth
Tube material.....:		Copper
Fin material.....:		Alu
Height/Width (finned).....:	[mm]	450,0 / 64,95
Connection inlet.....:	[mm]	20 / 27
Connection outlet.....:	[mm]	20 / 27 - Same side
Surface area.....:	[m2]	10,3
Circuit volume.....:	[dm3]	1,8